



## AIREGARD (INDIA) PVT. LTD.

Plot No.4-A, Lane No.2, Rampura  
Road, Opp. Gill Farm, G.T. Road,  
Daburji, Amritsar, Punjab ( 143001 )

+917783999222

+917783999555

info@airegardindia.com

facebook.com/airegardindia

www.airegardindia.co.in

AireGard India TV

instagram.com/airegardindia

V.19.1

# Discover HVLS



## QUALITY IN EVERY INCH OF AIREGARD HVLS FAN

Every one of our HVLS fans is engineered to deliver the smoothest, most efficient, and most precise airflow possible. Our fan blades are made from aviation grade magnalium, that makes them stronger and lighter.

Using only world class, industrial -grade components and the highest quality parts to ensure the most efficient, and reliable fan. We offer you the best-value proposition in the market from an investment perspective.

**Lenze**

**YASKAWA**

**RITTAL**

***Danfoss***



## CHOOSE AIREGARD HVLS FANS FOR

### 1 SUPERIOR VENTILATION

DELIVERS UP TO MORE THAN 500,000 CFM OF AIR.

### 2 IMPROVE THERMAL COMFORT

CREATING A COOLING EFFECT UP TO 4°C BY CREATING AN EQUAL CONSTANT TEMPERATURE IN ITS SURROUNDING SPACE.

### 3 SILENT OPERATION

ENGINEERED TO DELIVER SILENCE AND EFFICIENT NON-DISRUPTIVE OPERATION.

### 4 COST SAVING

AIREGARD HVLS PRIMARILY USES MINIMAL ENERGY, IT ALSO HELPS IN LOWERING THE COST OF AIR-CONDITIONING WITH LESSER ENERGY USED.

### 5 EASE OF MIND

WE PROVIDE 360° SERVICES FROM GETTING THE RIGHT FAN WITH THE RIGHT BUDGET FOR YOUR SPACE TO PROFESSIONAL INSTALLATION AND DEDICATED AFTER-SALES SERVICES.



PS SERIES

## DRIVE TRAIN

Running on Permanent Magnet Synchronous brushless direct drive motor (PMSM), the PS series offers the latest HVLS fan technology with 15% noise level reduction, high control accuracy, great airflow and totally maintenance-free.



## AEROFOIL BLADES

Our aerofoil blades are made of aviation grade magnalium (magnesium alloy) and finished in fluorocarbon coating to withstand the toughest environment. It's unique patented design structure is further strengthened with 3 vertical stiffeners within the length of each blade to avoid structural fatigue.



## AERO WINGLET



A wingtip is attached to a distal end of the aerofoils to reduce drag and improve downward lift, creating up to 40% more air than most of our competitors.

## SKF BEARING



AireGard HVLS PS Series uses top industrial grade bearing from SKF, reputable in optimizing performance with great stability control, exceptional strength and durability, enabling twice the service life of a bearing.

PS SERIES

## PS SERIES



BLADES	PS-8	PS-10	PS-12	PS-14
Blade diameter	8 ft (2.4 m)	10 ft (3.0 m)	12 ft (3.6 m)	14 ft (4.2 m)
Blade style	Aerofoil with winglet			
Blade material	Magnalium (Aluminium Alloy) , Carbon Fluorine Treated Surface			
Number of blades	8			

### PERFORMANCE & POWER

Max. Displacement	160,558 CFM	195,176 CFM	231,530 CFM	266,470 CFM
Variable Speed	120 RPM	100 RPM	90 RPM	80 RPM
Max. Power Usage	0.15kW	0.2kW	0.3kW	0.41 kW
Rated Current (Max.)	0.9 Amps	1.3 Amps	1.5 Amps	1.8 Amps
Input Voltage	220 - 240 V / 1 P			

### WEIGHT & DIMENSIONS

Fan Weight	31 kg	35 kg	38 kg	41 kg
------------	-------	-------	-------	-------

### MOTOR

Motor Type	PMSM Motor
Drive Train	Gearless Direct Drive
Max. Torque	115 Nm
Mechanical Efficiency	0.8

Max. Ambient Temperature for Operation	80 Celcius
Degree of Protection	IP65 ( IEC 60529 Edition 2-1 : 2001 )
Cooling System	Centrifugal Cooling
Sound Level	< 43 dB

### CONTROLS

Control Type	Variable Frequency Drive ( Inverter Drive )
Features	Dual Microprocessor Logic, LED Status Display , Built-in Dynamic Braking Transistor
Manufacturer	Yaskawa Electric Corporation / Danfoss Engineering
Max. Ambient Temperature for Operation	50 Celcius

### INSTALLATION

Mounting Hardware	Complete Mounting Kit Included
Drop Extensions	Optional Extension Lengths Available

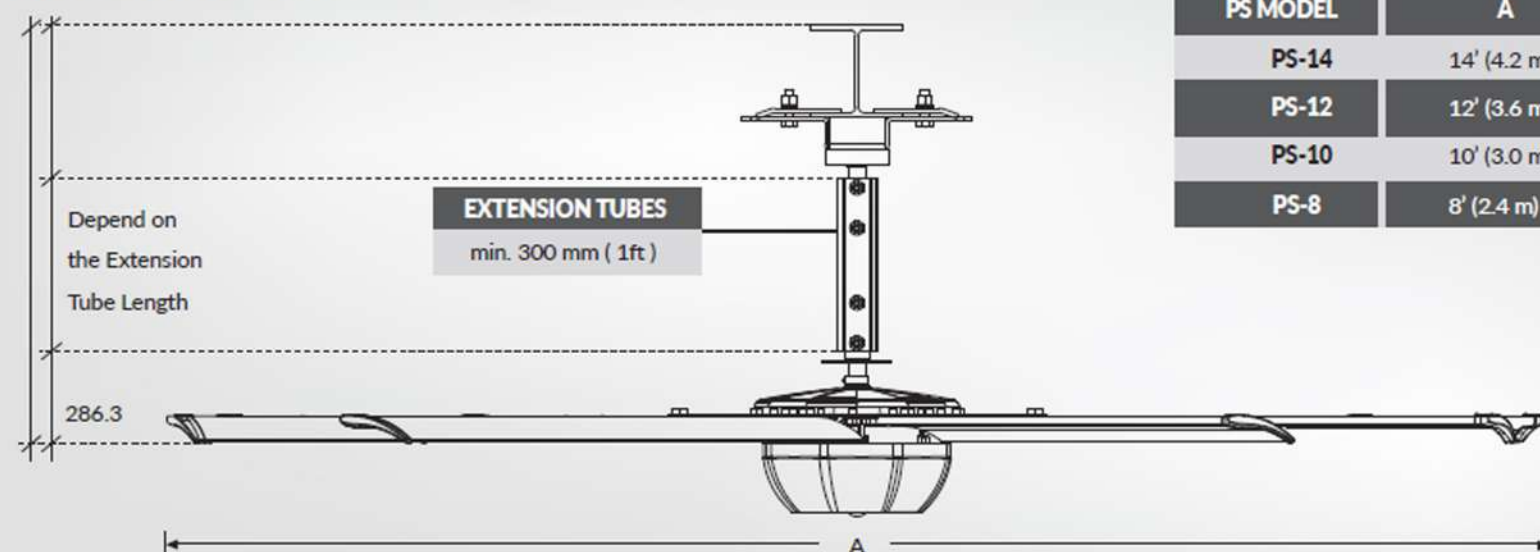
### WARRANTY

WARRANTY	5 Years**
----------	-----------

\*\*Subject to Terms & Conditions.

PS SERIES

## LINE DRAWING



PS MODEL	A
PS-14	14' (4.2 m)
PS-12	12' (3.6 m)
PS-10	10' (3.0 m)
PS-8	8' (2.4 m)

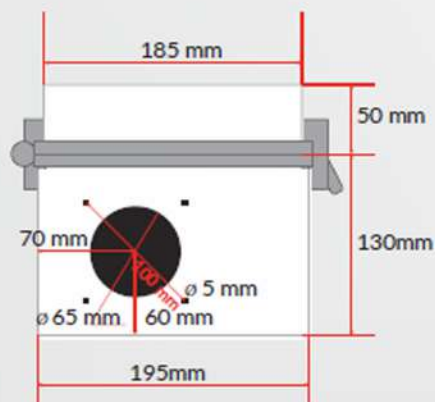
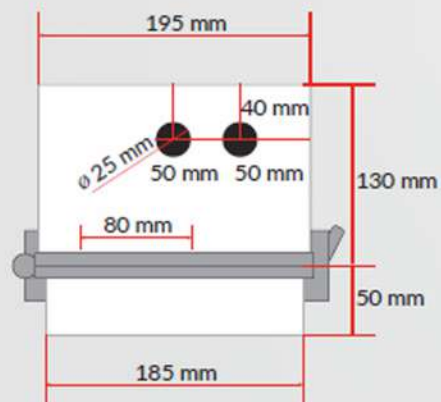
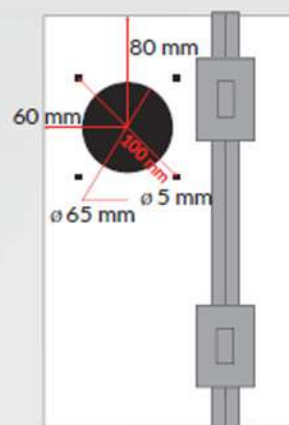
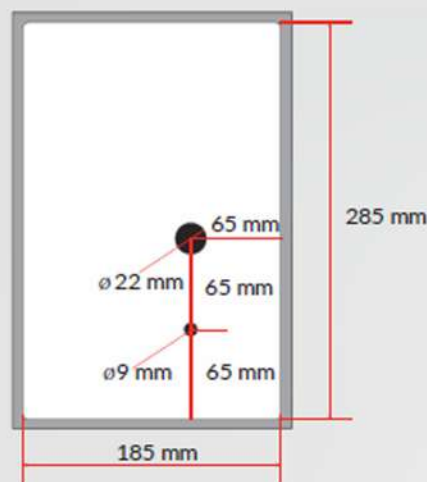
## GENERAL GUIDELINE

Before beginning installation, check that the building structure and fan location meet safety guidelines by confirming the below requirements.

- Fans mounted on fabricated I-beams, which are common in steel buildings, could cause the beam to flex and the fan to move during operation.
- The fan's lateral movement must be secured using guy wires if the fan's extension tube is longer than 1 ft (0.3 m) or if the mounting structure requires it. If the fan is close to any building fixtures, it is recommended to secure the fan with guy wires as a safety measure.
- The fan must be installed so that it is  $\geq 10$  ft (3 m) above the finished floor.
- Multiple fans must be spaced at a center-to-center distance that is no less than 2.5x the fan diameter.
- All fan parts must be  $\geq 2$  ft (0.6m) from all obstructions. The fan installation area must be free of obstructions such as lights, cables, sprinklers, or other building structure component.

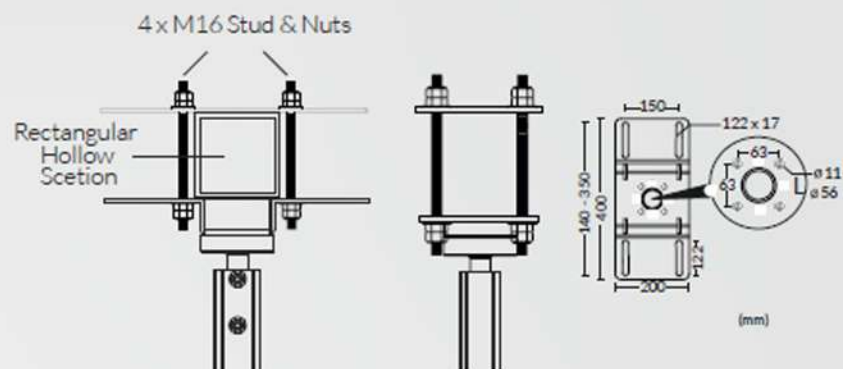
\*For specific requirements, please call 1300-88-4273

## CONTROL BOX SPECIFICATIONS

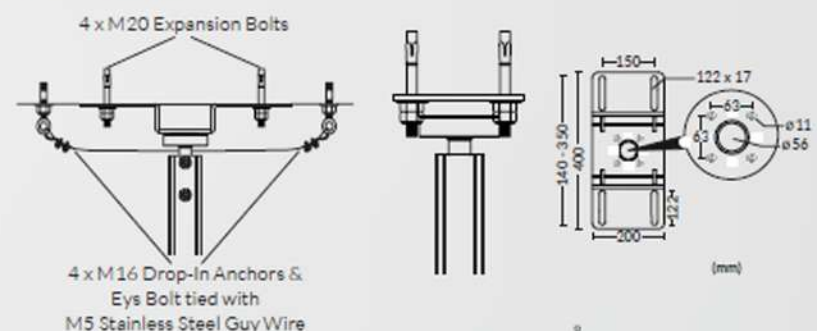


## MOUNTING DETAILS

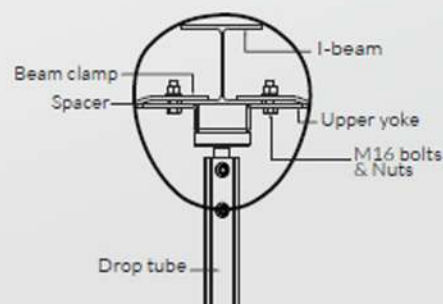
For Rectangular Hollow Section & Circular Hollow Section



For Concrete Slab



I-BEAM



PS SERIES



#### Pos Malaysia , Shah Alam

#### PS Series

Facility managers worked with AireGard to create powerful air movement that kept workers cool in this semi air-conditioned facility. The facility installed ten DC-14(4.2-m) fans to help circulate the conditioned air in the plant to eliminate heat pockets for better comfort and even temperature.



#### The Gasket Alley, Petaling Jaya

#### PS Series

Petrol Heads. Custom motorcycles. Groovy folks. Good vibes. The Gasket Alley is a curated space housing all of the above, with a huge knack for events from time to time. That's where they also realised the need for cool spaces. They wanted to up the comfort level without compromising their goal of being the greenest auto shop in the business and their choice of solution was to install 2 units of our DC-12 (3.6m) diameter HVLS fans. The hot rods couldn't have been more cooler.



## GARD SQUAD

At AireGard, we set ourselves apart from the competition by providing professional installation, excellent customer service and prompt after-sales services. Our promise is only possible simply because of Gard Squad, our in-house technical team who are well groomed for the job to deliver superb customer satisfaction.

Specially factory-trained and certified, Gard Squad team takes the guess work out of any problems or service call and in reliably quick time.



### SITE EVALUATION

Our trained engineers will visit your site to evaluate the situation



### DESIGN

Valuable info collected from site visit will be important for our team to design an action plan for your site.



### PROPOSAL

We will present the proposal to you and explain thoroughly on what should you install and why.