



AIREGARD (INDIA) PVT. LTD.

Plot No.4-A, Lane No.2, Rampura
Road, Opp. Gill Farm, G.T. Road,
Daburji, Amritsar, Punjab (143001)

+917783999222

+917783999555

info@airegardindia.com

facebook.com/airegardindia

www.airegardindia.co.in

AireGard India TV

instagram.com/airegardindia

V.19.1

Discover HVLS



QUALITY IN EVERY INCH OF AIREGARD HVLS FAN

Every one of our HVLS fans is engineered to deliver the smoothest, most efficient, and most precise airflow possible. Our fan blades are made from aviation grade magnesium, that makes them stronger and lighter.

Using only world class, industrial-grade components and the highest quality parts to ensure the most efficient, and reliable fan. We offer you the best-value proposition in the market from an investment perspective.

Lenze

YASKAWA

RITTAL

Danfoss



CHOOSE AIREGARD HVLS FANS FOR

1 SUPERIOR VENTILATION

DELIVERS UP TO MORE THAN 500,000 CFM OF AIR.

2 IMPROVE THERMAL COMFORT

CREATING A COOLING EFFECT UP TO 4°C BY CREATING AN EQUAL CONSTANT TEMPERATURE IN ITS SURROUNDING SPACE.

3 SILENT OPERATION

ENGINEERED TO DELIVER SILENCE AND EFFICIENT NON-DISRUPTIVE OPERATION.

4 COST SAVING

AIREGARD HVLS PRIMARILY USES MINIMAL ENERGY. IT ALSO HELPS IN LOWERING THE COST OF AIR-CONDITIONING WITH LESSER ENERGY USED.

5 EASE OF MIND

WE PROVIDE 360° SERVICES FROM GETTING THE RIGHT FAN WITH THE RIGHT BUDGET FOR YOUR SPACE TO PROFESSIONAL INSTALLATION AND DEDICATED AFTER-SALES SERVICES.



EXHILARATING PERFORMANCE

Operating on the epitome of HVLS motor technology, the PSX series runs on Permanent Magnet Synchronous brushless direct drive motor (PMSM) offering 30% increase in airflow, amazing torque balance, 15% reduced noise level and high transmission efficiency.



TOTALLY FREE OF MAINTENANCE



Different from gear technology products using regular replacement of lubricating oil in gearbox, the PSX series PMSM motor, based on the principle of electromagnetic induction and double bearing transmission, is completely sealed and truly free maintenance. No more costly gearbox maintenance visits and no more oil leakages.

AEROFOIL BLADES

Our aerofoil blades are made of aviation grade magnesium (magnesium alloy) and finished in fluorocarbon coating to withstand the toughest environment. It's unique patented design structure is further strengthened with 3 vertical stiffeners within the length of each blade to avoid structural fatigue.

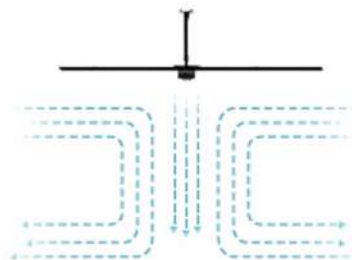


AERO WINGLET

A wingtip is attached to a distal end of the aerofoils to reduce drag and improve downward lift, creating up to 40% more air than most of our competitors.

EXCELLENT COVERAGE

The super large air volume and coverage area brings comfortable natural breeze and make the working environment change positively. It can, not only directly cool the human body, but also bring the whole area excellent ventilation and efficient dehumidification and moisture removal effect.



PSX SERIES

PSX SERIES



BLADES	PSX-16	PSX-18	PSX-20	PSX-24
Blade diameter	16 ft (4.9 m)	18 ft (5.5 m)	20 ft (6.1 m)	24 ft (7.3 m)
Blade style	Aerofoil with winglet			
Blade material	Magnalium (Aluminium Alloy) , Carbon Fluorine Treated Surface			
Number of blades	5			

PERFORMANCE & POWER

Max. Displacement	405,882 CFM	430,588 CFM	455,294 CFM	522,353 CFM
Variable Speed	10 - 75 RPM	10 - 65 RPM	10 - 60 RPM	10 - 56 RPM
Max. Power Usage	0.8 kW	0.9 kW	1.1 kW	1.5 kW
Rated Current (Max.)	3.6 A	4.1 A	5.0 A	6.8 A
Input Voltage	220 - 240 V / 1 P			

WEIGHT & DIMENSIONS

Fan Weight	115 kg	120 kg	129 kg	135 kg
------------	--------	--------	--------	--------

MOTOR

Motor Type	Permanent Magnet Synchronous Motor (PMSM)
Drive Train	Direct Drive Gearless
Max. Torque	260 Nm
Mechanical Efficiency	0.94

Max. Ambient Temperature for Operation	80 Celcius
Degree of Protection	IP55
Cooling System	Heat Sink Cooling
Sound Level	< 40 dBA

CONTROLS

Control Type	Variable Frequency Drive (Inverter Drive)
Features	Dual Microprocessor Logic, LED Status Display , Built-in Dynamic Braking Transistor
Manufacturer	Yaskawa Electric Corporation/Danfoss Engineering
Max. Ambient Temperature for Operation	50 Celcius

INSTALLATION

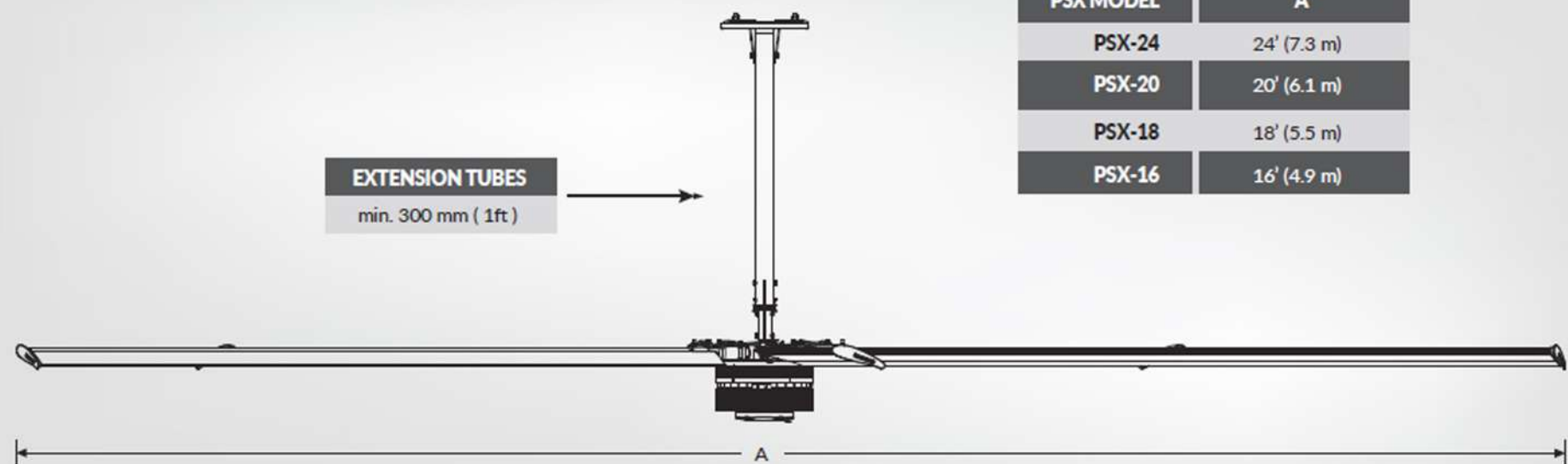
Mounting Hardware	Complete Mounting Kit Included
Drop Extensions	Optional Extension Lengths Available

WARRANTY

WARRANTY	5 Years**
----------	-----------

**Subject to Terms & Conditions.

LINE DRAWING



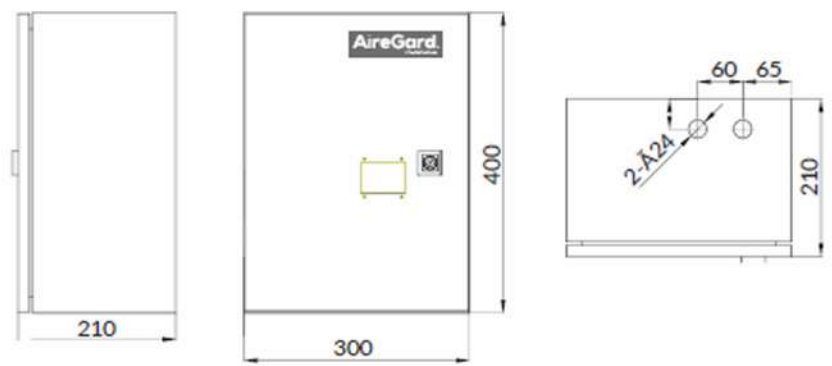
PSX MODEL	A
PSX-24	24' (7.3 m)
PSX-20	20' (6.1 m)
PSX-18	18' (5.5 m)
PSX-16	16' (4.9 m)

GENERAL GUIDELINE

Before beginning installation, check that the building structure and fan location meet safety guidelines by confirming the below requirements.

- Fans mounted on fabricated I-beams, which are common in steel buildings, could cause the beam to flex and the fan to move during operation.
- The fan's lateral movement must be secured using guy wires if the fan's extension tube is longer than 1 ft (0.3 m) or if the mounting structure requires it. If the fan is close to any building fixtures, it is recommended to secure the fan with guy wires as a safety measure.
- The fan must be installed so that it is ≥ 10 ft (3 m) above the finished floor.
- Multiple fans must be spaced at a center-to-center distance that is no less than 2.5x the fan diameter.
- All fan parts must be ≥ 2 ft (0.6m) from all obstructions. The fan installation area must be free of obstructions such as lights, cables, sprinklers, or other building structure component.

CONTROL BOX SPECIFICATIONS

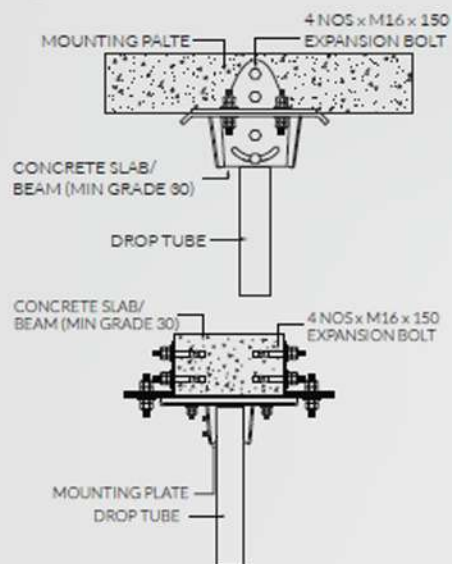


(mm)

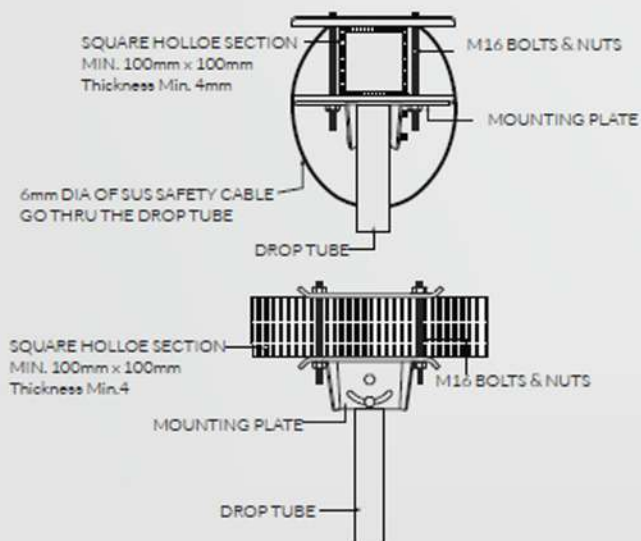
*For specific requirements, please call 1300-88-4273

MOUNTING DETAILS

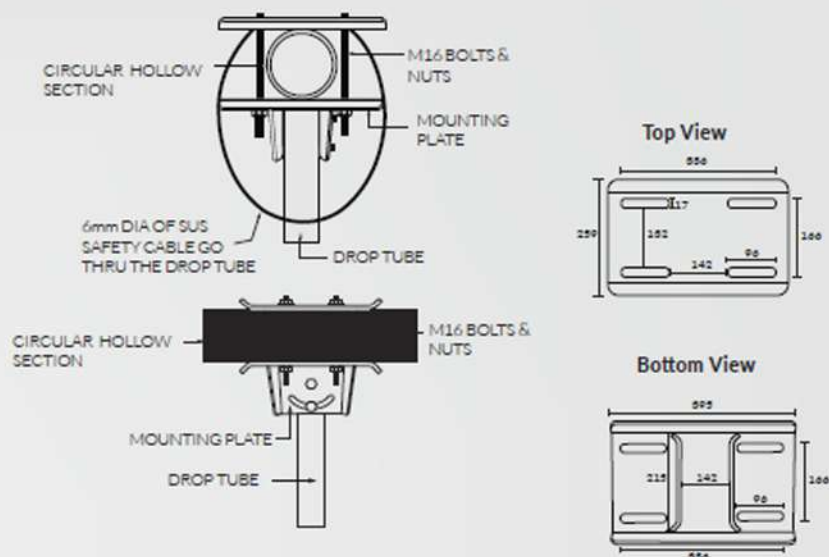
Mounting Details To Concrete Beam



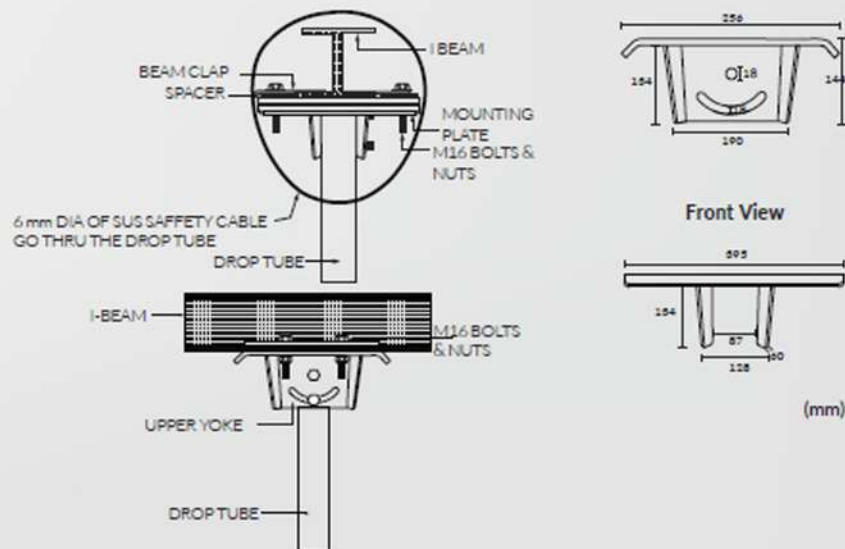
Mounting Details To Square/Rectangular Hollow Section



Mounting Details To Circular Hollow Section



Mounting Details To I-BEAM





Malaysian Flying Academy, Melaka PSX Series

The MFA has to take their safety standards very seriously. Safety will always be the first priority of every transport organization. As they said "prevention is better than cure". MFA took the initiative to upgrade the airflow in their hangar. Providing excellent thermal comfort and cool airflow for their engineers and safety officers. This will constantly boost their productivity to ensure every job is done at its best condition. With two PSX Series HVLS fan, they will save electricity cost and energy in the long run.



Proton Service Center, Bandar Sungai Long PSX Series

In order to find a solution to solve the excessive heat problem and productivity in their large service facility, they came across their neighbour (Honda) who installed AireGard HVLS fans. Not only did hvls fans cool down the temperature and provide airflow, it also tremendously boost work productivity in the facility. When the workers feel thermally comfortable, they are able to focus and get their head in the work. They decided to trust us with a pair of PSX.



Menara AIA, Jalan Ampang

PSX Series

They needed an efficient and effective airflow solution to their open lounge area. As a well known company in the city centre of KL, they prefer a well perform and futuristic design to maintain their reputation of an iconic image and brand. We proposed the PSX Series, our latest motor technology in a HVLS fan. They were fascinated by it's features of a new dc gearless PMSM Motor. With no gear and no gear oil that means total low maintenance. They absolutely love the idea of a worry free after sales service experience. .



The Gasket Alley, Petaling Jaya

PS Series

Petrol Heads. Custom motorcycles. Groovy folks. Good vibes. The Gasket Alley is a curated space housing all of the above, with a huge knack for events from time to time. That's where they also realised the need for cool spaces. They wanted to up the comfort level without compromising their goal of being the greenest auto shop in the business and their choice of solution was to install 2 units of our DC-12 (3.6m) diameter HVLS fans. The hot rods couldn't have been more cooler.

PROJECT REFERENCE
IN MALAYSIA



GARD SQUAD

At AireGard, we set ourselves apart from the competition by providing professional installation, excellent customer service and prompt after-sales services. Our promise is only possible simply because of Gard Squad, our in-house technical team who are well groomed for the job to deliver superb customer satisfaction.

Specially factory-trained and certified, Gard Squad team takes the guess work out of any problems or service call and in reliably quick time.



SITE EVALUATION

Our trained engineers will visit your site to evaluate the situation



DESIGN

Valuable info collected from site visit will be important for our team to design an action plan for your site.



PROPOSAL

We will present the proposal to you and explain thoroughly on what should you install and why.